

# Flood Risk Map for the Sumida River and Shingashi River Basin (Revised)

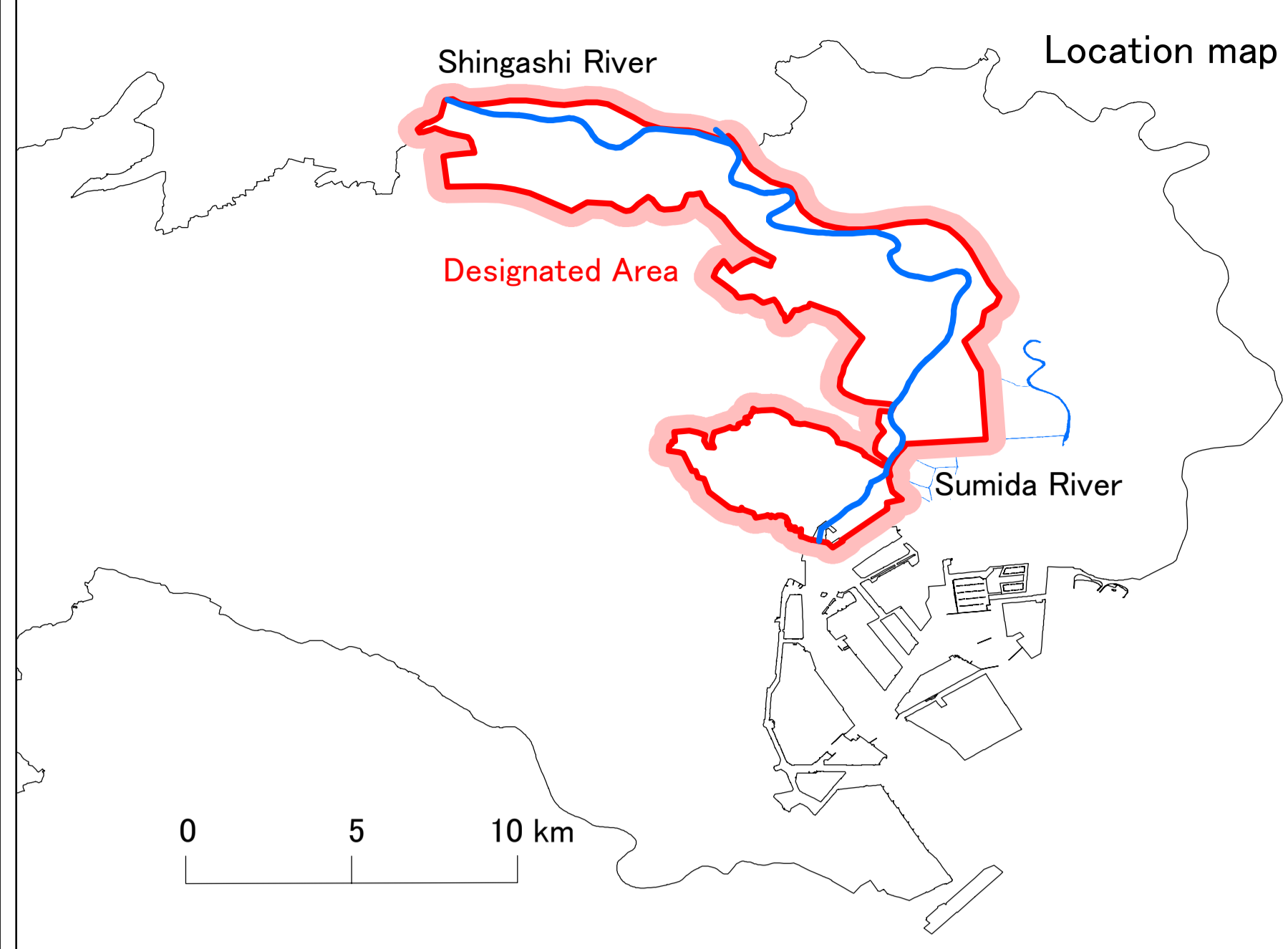
This map uses the same set of colors as previous flood risk maps to indicate inundation depths.

## 1. About this map

- (1) This map shows the areas expected to flood and anticipated maximum depth of inundation in the event of heavy rain for drainage Sumida River and Shingashi River Basin (includes areas where rainwater is directly discharge into the ocean). The assumed rainfall used for previous flood risk maps was the September 2000 Tokai Region Heavy Rain Disaster (Hourly rainfall: 114mm Total: 589mm), but for this revised edition, the maximum assumed rainfall was used.
- (2) By informing the public of the risk of flooding, we hope that knowledge will be applied in times of emergency to stay safe and evacuate, as well as to devise smarter life styles with respect to flood risk.
- (3) This flood risk map (revised) uses a simulation to show inundation expected should the maximum assumed rainfall occur in the covered areas. The simulation is based on the situation of the rivers, flood control pond and the sewerage system in the covered areas as of 2018.
- (4) The areas expected to flood and extent of inundation can vary depending on the intensity of rain, changes of the form of land, and improvements on rivers and the sewerage system.

## 2. Basic information

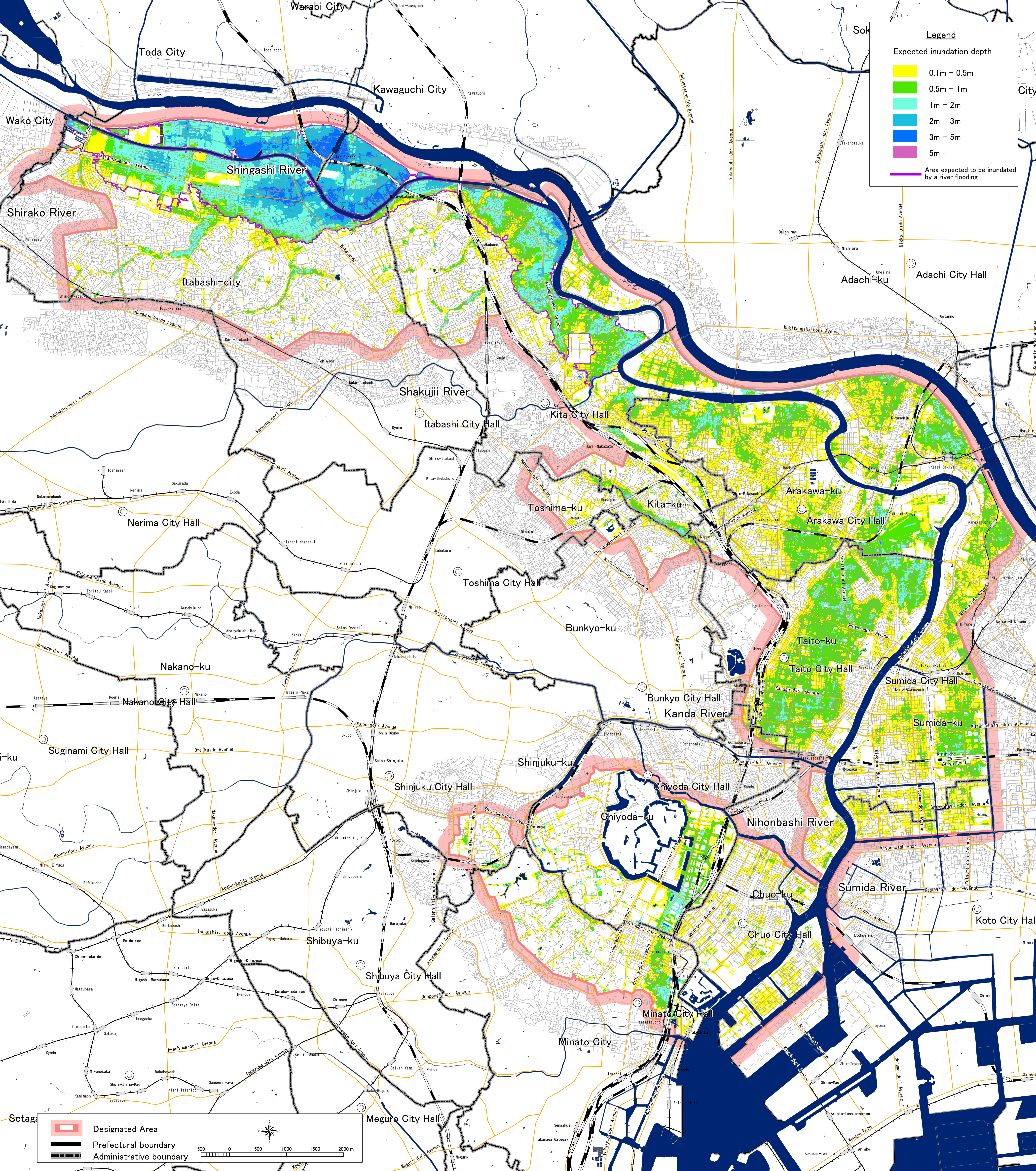
- (1) Map created by the Council for Protection Against Urban Flooding (Sumida River and Shingashi River Basin)
  - (2) Map created on March 3, 2021
  - (3) Areas covered  
Arakawa River system (Sumida, Shingashi rivers)
  - (4) Assumed rainfall  
Maximum assumed rainfall (Hourly rainfall: 153mm Total: 690mm)
  - (5) Relevant wards  
Chiyoda-ku, Chuo-ku, Minato-City, Shinjuku-ku, Bunkyo-ku, Taito-ku, Sumida-ku, Koto-ku, Toshima-ku, Kita-ku, Arakawa-ku, Itabashi-City, Nerima-ku, Adachi-ku
3. Notes  
Most riverside areas are low-lying, so it should be noted that they can be inundated by deep water when the river floods. Also, areas some distance away from rivers can be inundated by deep water if they are low-lying. Please also note that the simulation does not consider infiltration inlets blocked by fallen leaves or other factors that could cause inundation.



(Inquiries)

Tokyo Metropolitan Government (Planning Section, River Division, Bureau of Construction)	03-5321-1111
Tokyo Metropolitan Government (Disaster Prevention Section, River Division, Bureau of Construction)	03-5321-1111
Tokyo Metropolitan Government (Planning Section, Planning and Coordination Division, Bureau of Sewerage)	03-5321-1111
Chiyoda-ku (Policy Management Division, Disaster Countermeasures and Risk Management Section)	03-3264-2111
Chuo-ku (General Affairs Department, Disaster Prevention Section)	03-3543-0211
Minato City (City Development Support Department Public Works Section)	03-3578-2111
Shinjuku-ku (Crisis Management Division, Crisis Management Section)	03-3209-2111
Bunkyo-ku (General Affairs Department, Prevention Section)	03-3812-7111
Taito-ku (General Affairs Division, Disaster Prevention Section)	03-5246-1111
Sumida-ku (City Planning Department, Disaster Prevention Section)	03-5608-1111
Koto City (Public Works Department, Rivers and Parks Division)	03-3647-9111
Toshima-ku (General Affairs Division, Disaster Prevention and Crisis Management Section)	03-3981-1111
Kita-ku (Civil Engineering Division, Road and Park Section)	03-3908-1111
Arakawa-ku (Elder Residents Life Division, Disaster Prevention Section)	03-3802-3111
Itabashi-city (Crisis Management Room, Disaster Prevention and Crisis Management Section)	03-3694-1111
Nerima-ku (Crisis Management Room, Disaster Prevention Section)	03-3993-1111
Adachi-ku (Urban Construction Division, Planning Coordination Section)	03-3880-5111

Note: These are main phone numbers.



**Legend**

Expected inundation depth

- 0.1m - 0.5m
- 0.5m - 1m
- 1m - 2m
- 2m - 3m
- 3m - 5m
- 5m -

Area expected to be inundated by a river flooding

Designated Area

Prefectural boundary

Administrative boundary

Scale: 0, 500, 1000, 1500, 2000m