

Map of Areas With Risk of Flooding Due to Overflow of the Shibuya, Furukawa Rivers of the Furukawa River System and Meguro River of Meguro River System and Nomikawa River of Nomikawa River System (inundation duration)

1. About this map

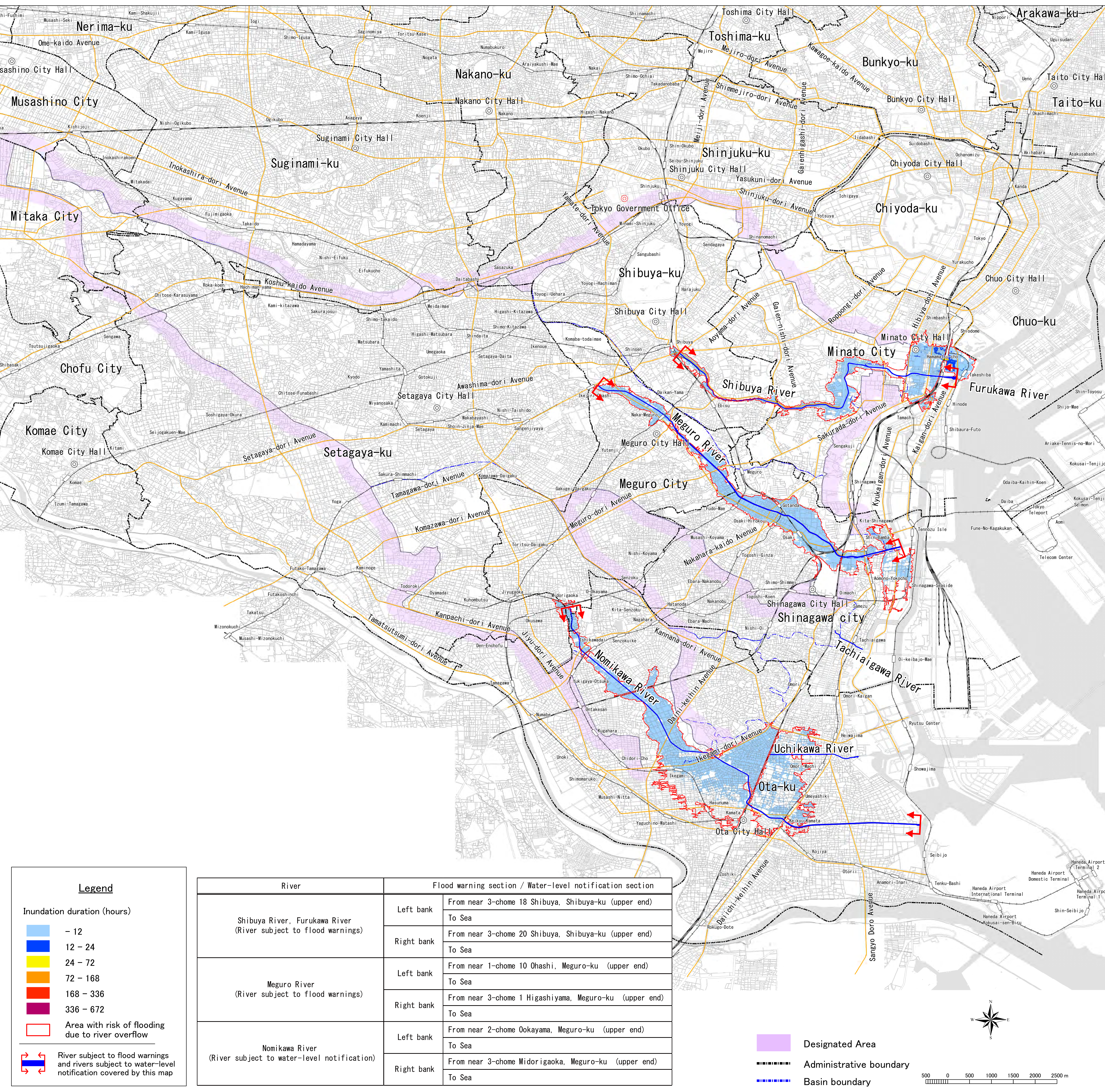
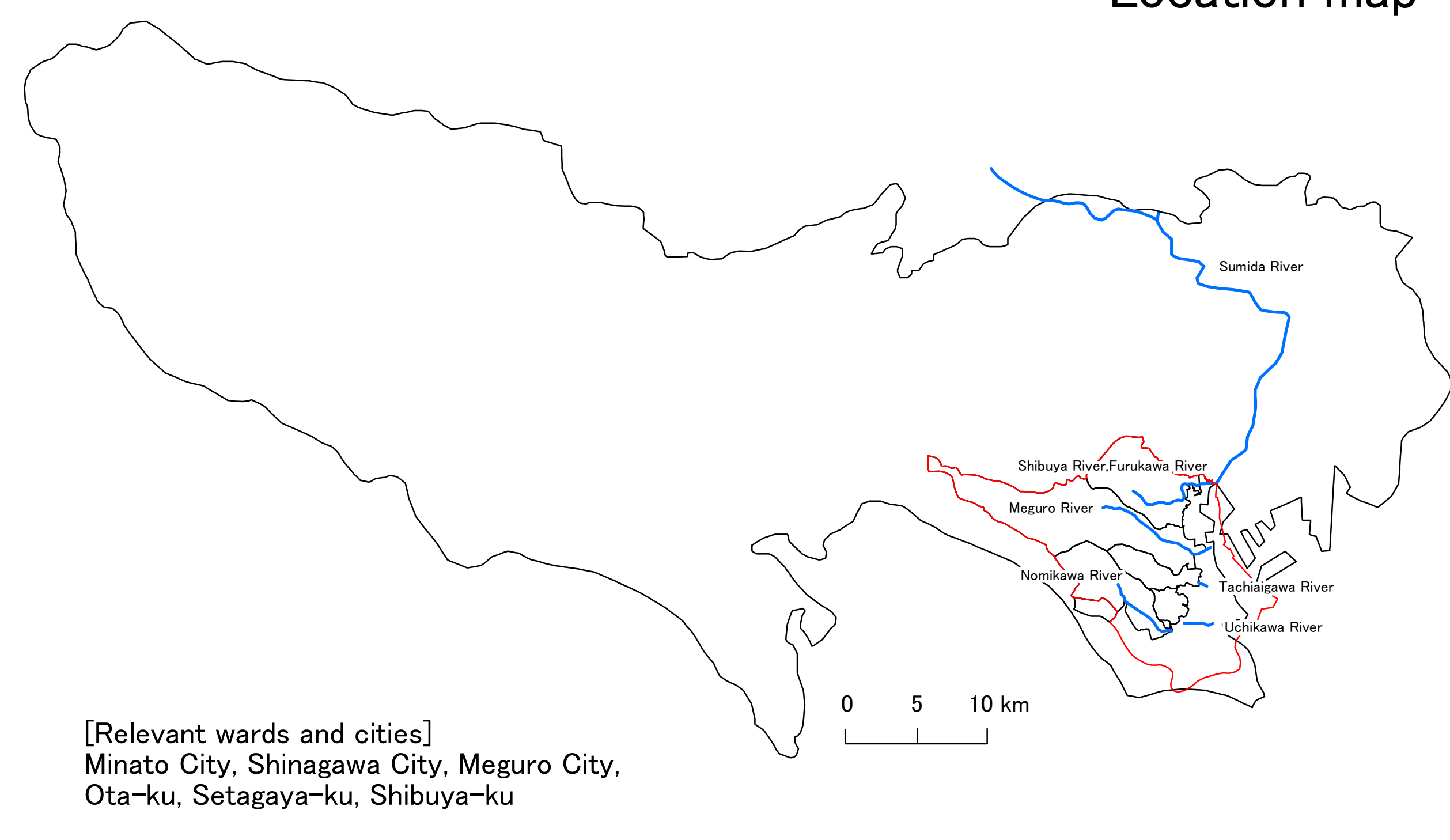
- Pursuant to the provisions of the Flood Control Act, this map shows the duration of inundation for the maximum assumed rainfall for sections subject to flood warnings of the Shibuya, Furukawa Rivers of the Furukawa River System and Meguro River of Meguro River System and those subject to water-level notification of the Nomikawa River of Nomikawa River System.
- This river flood risk map shows the estimated duration of 50cm or deeper inundation that occurs due to overflow of the Shibuya, Furukawa Rivers of the Furukawa River System and Meguro River of Meguro River System and Nomikawa River of Nomikawa River System resulting from the maximum assumed rainfall. The simulation is based on the situation of the river channels and flood control facilities as of the time of the map's publication.
- Because the simulation does not take into account flooding of tributaries or flooding caused by rainfall greater than the assumed level, by a storm surge, or by runoff of rainwater, the actual duration of inundation may differ from the estimates and inundation may also occur in areas not indicated on this map.

2. Basic information

- Map created by the Tokyo Metropolitan Government
- Risk areas designated on June 27, 2019
- Released as TMG announcement No. 162
- Designation made based on Article 14, paragraph 2 of the Flood Control Act (Act No. 193 of 1949)
- River subject to flood warnings covered by this map
Shibuya, Furukawa Rivers of the Furukawa River System (The flood warning section is shown in the table below.)
Meguro River of Meguro River System (The flood warning section is shown in the table below.)
- Rivers subject to water-level notification covered by this map
Nomikawa River of Nomikawa River System (The water-level notification section is shown in the table below.)
- Assumed rainfall
Up to 153mm per hour and 690mm in 24 hours in the Shibuya, Furukawa, Meguro, Nomikawa Rivers basin

[Inquiries]
Disaster Prevention Section, River Division,
Bureau of Construction, Tokyo Metropolitan Government
Main Phone: 03-5321-1111

Location map



Legend

- Inundation duration (hours)
- Light Blue: - 12
 - Blue: 12 - 24
 - Yellow: 24 - 72
 - Orange: 72 - 168
 - Red: 168 - 336
 - Dark Red: 336 - 672
- Red outline: Area with risk of flooding due to river overflow
- Blue outline: River subject to flood warnings and rivers subject to water-level notification covered by this map

River	Flood warning section / Water-level notification section	
Shibuya River, Furukawa River (River subject to flood warnings)	Left bank	From near 3-chome 18 Shibuya, Shibuya-ku (upper end) To Sea
	Right bank	From near 3-chome 20 Shibuya, Shibuya-ku (upper end) To Sea
Meguro River (River subject to flood warnings)	Left bank	From near 1-chome 10 Ohashi, Meguro-ku (upper end) To Sea
	Right bank	From near 3-chome 1 Higashiyama, Meguro-ku (upper end) To Sea
Nomikawa River (River subject to water-level notification)	Left bank	From near 2-chome Ookayama, Meguro-ku (upper end) To Sea
	Right bank	From near 3-chome Midorigaoka, Meguro-ku (upper end) To Sea

