

# Map of Areas With Risk of Flooding Due to Overflow of the Shakuji River of the Arakawa River System (estimated high rainfall)

## 1. About this map

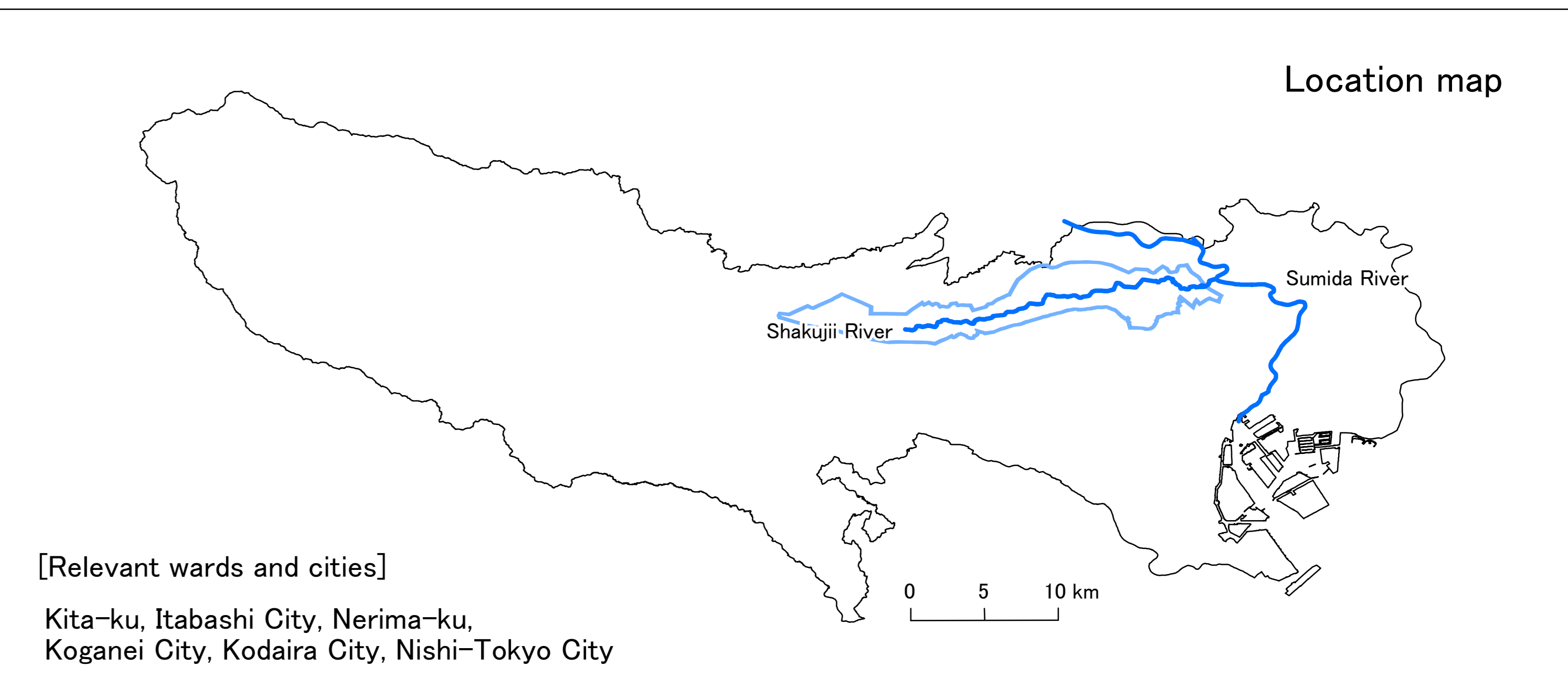
- Pursuant to the provisions of the Flood Control Act, this map shows the areas expected to flood and anticipated depth of inundation that can occur when there is the level of rainfall used as a basis for flood control measures for sections subject to water-level notification of the Shakuji River of the Arakawa River System.
- This river flood risk map uses a simulation to show inundation that can occur due to overflow of the Shakuji River of the Arakawa River System resulting from the level of rainfall used as a basis for flood control measures with an annual exceedance probability of 1 percent. The simulation is based on the situation of the river channels and flood control facilities as of the time of the map's publication.
- Because the simulation does not take into account flooding of tributaries or flooding caused by rainfall greater than the assumed level, by a storm surge, or by runoff of rainwater, inundation may occur in areas other than those designated in this river flood risk map and the depths of flood water may differ from the estimates.

## 2. Basic information

- Map created by the Tokyo Metropolitan Government
- Map created on May 23, 2019
- Released as TMG announcement No. 55
- Designation made based on Article 14, paragraph 2 of the Flood Control Act (Act No. 193 of 1949)
- River subject to flood warnings covered by this map  
Shakuji River of the Arakawa River System  
(The Flood warning section is shown in the table below.)
- Assumed rainfall  
Up to 100mm per hour and 327mm in 24 hours in the Shakuji River basin

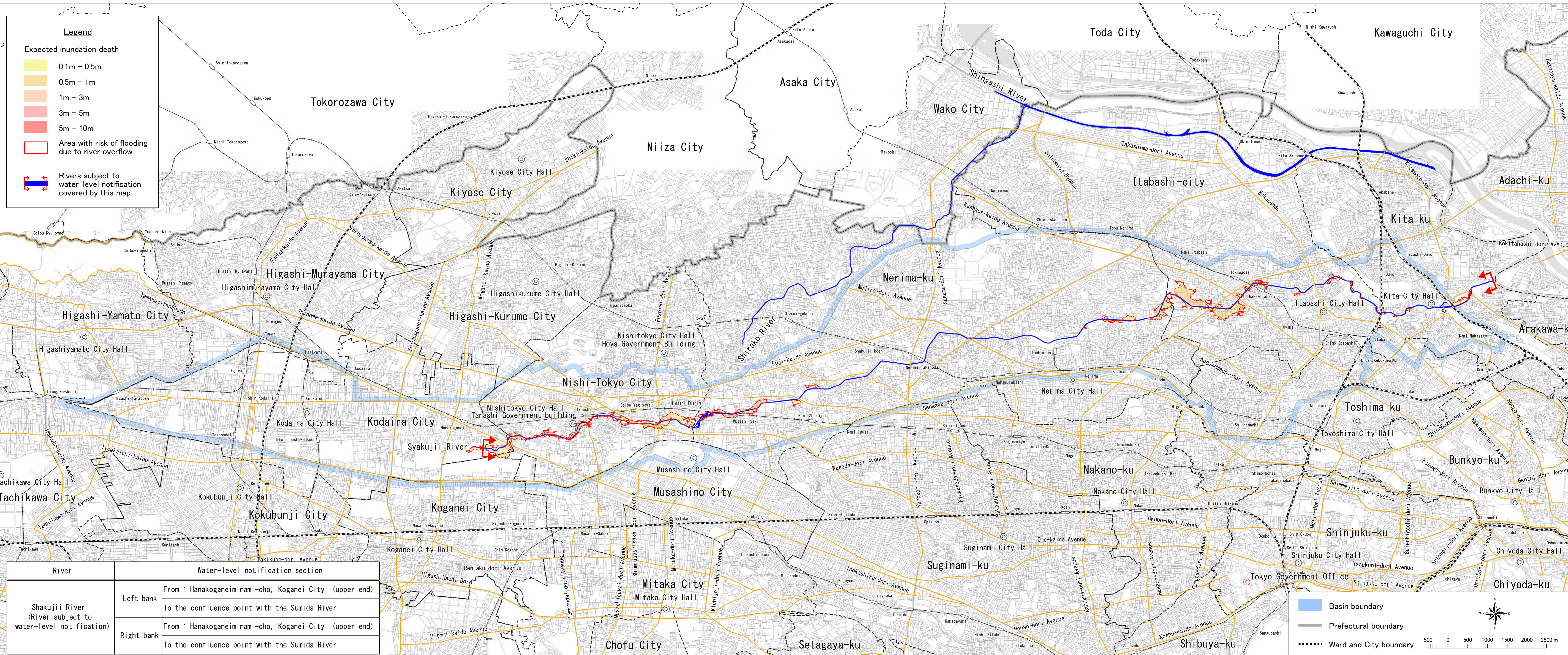
[Inquiries]  
Disaster Prevention Section, River Division, Bureau of Construction,  
Tokyo Metropolitan Government  
Main Phone: 03-5321-1111

Location map



[Relevant wards and cities]

Kita-ku, Itabashi City, Nerima-ku,  
Koganei City, Kodaira City, Nishi-Tokyo City



**Legend**

Expected inundation depth

- 0.1m - 0.5m
- 0.5m - 1m
- 1m - 3m
- 3m - 5m
- 5m - 10m

Area with risk of flooding due to river overflow

Rivers subject to water-level notification covered by this map

River	Water-level notification section	
Shakuji River (River subject to water-level notification)	Left bank	From : Hanakoganeiminami-cho, Koganei City (upper end) To the confluence point with the Sumida River
	Right bank	From : Hanakoganeiminami-cho, Koganei City (upper end) To the confluence point with the Sumida River

Basin boundary

Prefectural boundary

Ward and City boundary

Scale: 0 500 1000 1500 2000 2500 m

This map was created using a 1:2500 topographic map of Tokyo.  
(Approval number) 29-toshikou-552