

Oyamada Park

Administrator ■ Tokyo Metropolitan Park Association

- Location Shimo-Oyamada-machi, Kami-Oyamada-machi, Machida City
- Contact Information Oyamada Park Administration Office tel: 042-797-8968 (361-10 Shimo-Oyamada-machi, Machida-shi 194-0202)
- Transport 12-minute walk from Ogibashi bus stop on the Keio Bus for Nichidai-Sanko from Tama Center (Keio-Sagamihara line, Odakyu-Tama line, Tama Urban Monorail). 12-minute walk from Daisenji bus stop on Kanagawa Chuo Kotsu Bus for Oyamada from Machida (JR Yokohama line, Odakyu line). 12-minute walk from Ogibashi bus stop on Kanagawa Chuo Kotsu Bus for Tama-Kyuryo-Byoin from Machida (JR Yokohama line, Odakyu line). Free parking available.



Oyamada Park in northwest Machida City is located in a green hilly area adjacent to Tama New Town. Currently, about part of the 146 planned hectares of park is open.

The park is great for taking a stroll, sports, and observing nature. It has groves of trees as well as an open grassy field where one can play ball and a waterfront that is home to dragonflies and other creatures.

In the park surroundings, too, the pastoral landscape all around creates an atmosphere befitting the Tama hills. That makes the park great for hiking and other excursions.



Oyamada Park Bamboo Forest

Okubo park annex

This part of the park has a dragonfly pond and Japanese pampas grass field; and agricultural fields and farm-houses dotting the slope can be seen from the ridge. Yamanohata bus stop is about a ten-minute walk to the southwest of the pond.



Okubo park annex dragonfly pond

Exercise field/lookout field

Climb the hill and suddenly a field opens before you with the sky seeming to float above the woods in the distance. It is known as the remnants of a farm from the Medieval period. The Tanzawa Mountain Range and Mount Fuji can be viewed from the lookout field. There are also a small baseball field (fee required) and exercise field here.



Lookout field



Playground Equipment & Exercise Square

Yamanaka park annex

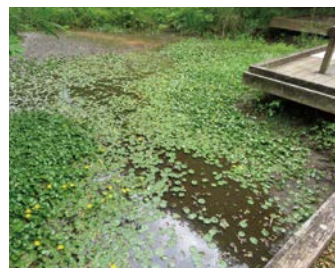
This park has an observation area offering good views of the wild woodlands, and a boardwalk that leads through a rich green forest to Karakida station on the Odakyu Tama line.

Oyamada valley

A holding pond, upper pond, lower pond, and regulating pond are situated in the long narrow valley surrounded by groves of trees; and a boardwalk runs along the valley. Various plants can be seen throughout the four seasons.

Umekikubo park annex

The ridgeline path through groves of trees meets the open valleyside path with rice paddies. Highlights along the way include the Floating Heart pond where various creatures play, and a suspended bridge over the valley.



Floating heart pond

Opened / June 1, 1990 Area / 444,364.04 m²

Main plants / Nettle tree, sawtooth oak, konara oak, Chinese evergreen oak, Golden orchid, Cephalanthera erecta, Japanese dandelion, Japanese silver grass

Facilities / Small baseball field (fee required), exercise field, lookout field, boardwalk, pond, suspension bridge, wooden playground equipment

